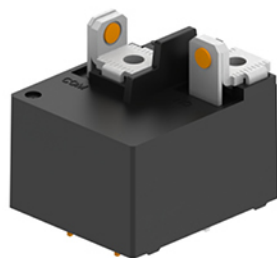


# MPQ4-L

## 家电类

Household Appliance

- 40A 触点切换能力
- F 级线圈绝缘等级
- 塑封型和防尘罩型可供选择
- 印制板式引出端，触点快连接引出端
- 外形尺寸 L × W × H: 32 × 27.1 × 31.9mm
- 40A Switching Capability
- Class F Insulation Available
- Sealed & dust protected available
- PCB layout & contact QC layout
- Outline Dimensions L × W × H: 32 × 27.1 × 31.9mm



MPQ4

S

1

12

D

A

L

| 产品型号<br>Model | 产品结构<br>Structure                                     | 触点组数<br>Contact Group | 线圈电压<br>Coil Voltage                 | 线圈电源<br>Coil Power | 触点形式<br>Contact arrangement | 结构形式<br>Structural Style                     |
|---------------|---|-----------------------|--------------------------------------|--------------------|-----------------------------|--|
|               | S: 塑封型<br>S: Sealed<br>无: 防尘罩型<br>Nil: Dust protected | 1: 1 组<br>1: 1 Group  | 05, 06, 09, 12<br>24, 48, 110<br>VDC | D: 直流<br>D: DC     | A: 常开<br>A: NO              | L: 螺纹端子结构<br>L: Thread Terminal<br>Structure |

### 触点参数 Contact Parameters

|   |                           |
|---|---------------------------|
| 触点形式 Contact Arrangement                | 1A                        |
| 触点材料 Contact Material                   | 银合金 Silver Alloy          |
| 接触电阻<br>Contact Resistance( 初始 Initial) | ≤50mΩ(1A 6VDC)            |
| 额定负载 ( 阻性 )Rated Load(Resistive)        | 30A 240VAC<br>20A 30VDC   |
| 最大切换电流 Max. Switching Current           | 40A                       |
| 最大切换电压 Max. Switching Voltage           | 240VAC/30VDC              |
| 最大切换功率 Max. Switching Power             | 9600VA/600W               |
| 电气寿命 Electrical Life                    | 1 × 10 <sup>5</sup> 次 OPS |
| 机械寿命 Mechanical Life                    | 1 × 10 <sup>6</sup> 次 OPS |

### 性能参数 Characteristics

|                            |   |                            |
|----------------------------|---|----------------------------|
| 绝缘电阻 Insulation Resistance | 1000MΩ(at 500VDC)   |                            |
| 介质耐压 Dielectric Strength   | 触点与线圈间 Between Coil & Contacts: 3500VAC 1min<br>断开触点间 Between Open Contacts: 1500VAC 1min |                            |
| 动作时间 Set time              | ≤15ms   |                            |
| 复归时间 Reset time            | ≤10ms   |                            |
| 环境温度 Ambient Temperature   | -40℃ ~+105℃   |                            |
| 振动 Vibration               | 10Hz~55Hz 1.5mm 双振幅 (DA)  |                            |
| 冲击 Shock                   | 稳定性 Functional  | 98m/s <sup>2</sup> (10G)   |
|                            | 强度 Destructive  | 980m/s <sup>2</sup> (100G) |
| 引出端方式 Terminal Form        | 印制板式和螺钉式 PCB & Screw type   |                            |
| 封装形式 Construction          | 塑封型 Sealed<br>防尘罩型 Dust Protected   |                            |
| 重量 Unit Weight             | 约 Approx.37g  |                            |

# MPQ4-L

线圈规格表 COIL DATA(23℃)

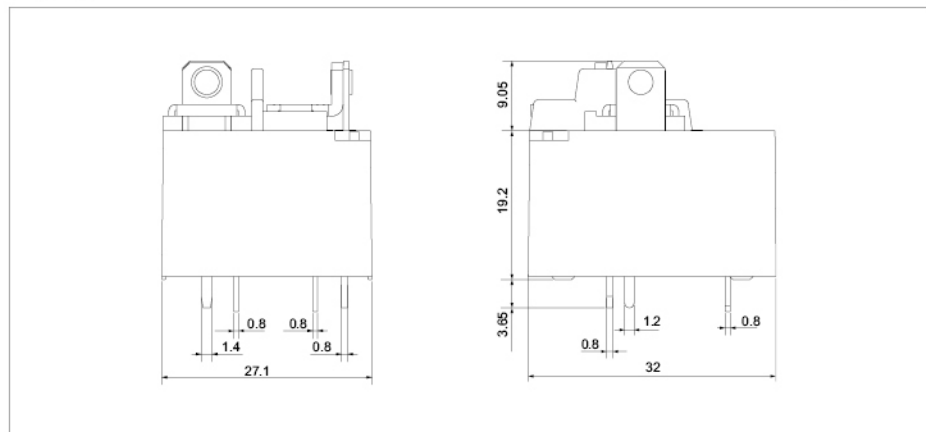
| 额定电压<br>Rated Voltage<br>VDC | 动作电压<br>Operate Voltage<br>VDC | 释放电压<br>Release Voltage<br>VDC | 最大允许电压<br>Max Allowable<br>Voltage | 线圈电阻<br>Coil Resistance<br>$\Omega \pm 10\%$ | 线圈功耗<br>Coil Power<br>W |
|------------------------------|--------------------------------|--------------------------------|------------------------------------|--|-------------------------|
| 5                            | $\leq 3.5$                     | $\geq 0.5$                     | 7.5                                | 28   | 约 Approx.<br>0.9        |
| 6                            | $\leq 4.5$                     | $\geq 0.3$                     | 9                                  | 40   |                         |
| 9                            | $\leq 6.75$                    | $\geq 0.45$                    | 13.5                               | 90   |                         |
| 12                           | $\leq 9$                       | $\geq 0.6$                     | 18                                 | 160  |                         |
| 18                           | $\leq 13.5$                    | $\geq 0.9$                     | 27                                 | 360  |                         |
| 24                           | $\leq 18$                      | $\geq 1.2$                     | 36                                 | 640  |                         |
| 48                           | $\leq 36$                      | $\geq 2.4$                     | 72                                 | 2560   |                         |
| 110                          | $\leq 82.5$                    | $\geq 5.5$                     | 165                                | 13440  |                         |

## 安全认证 Approvals

|                         |                         |                         |                         |
|-------------------------|-------------------------|-------------------------|-------------------------|
| 安全认证<br>Approvals       | UL                      | TUV                     | CQC                     |
| 证书编号<br>Certificate No. | E358149                 | R50184977               | CQC10002051838          |
| 负载<br>Rating            | 30A 240VAC<br>10A 30VDC | 30A 240VAC<br>20A 30VDC | 30A 240VAC<br>20A 30VDC |

## 外形尺寸 Outline Dimensions

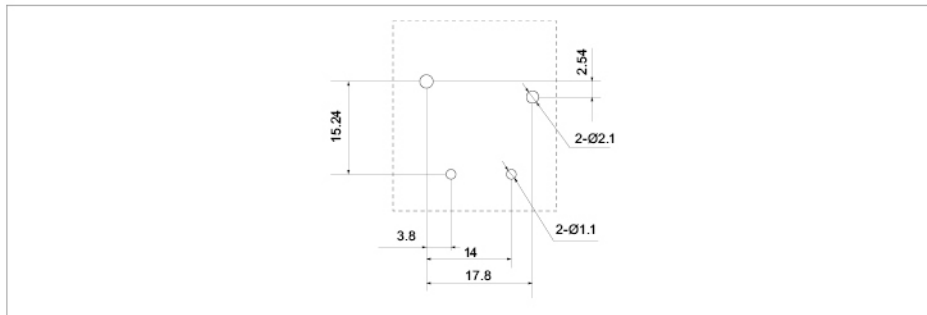
单位 Unit: mm



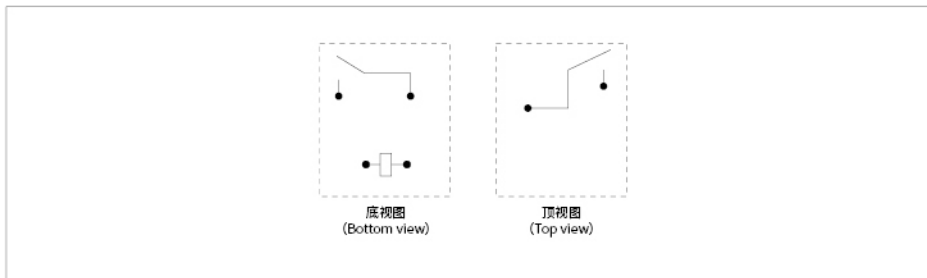
# MPQ4-L

## 安装孔尺寸 (底视图) PCB Layout (Bottom View)

单位 Unit: mm



## 接线图 Wiring Diagram



备注: (1) 产品部分外形尺寸未注尺寸公差, 当外形尺寸  $\leq 1\text{mm}$ , 公差为  $\pm 0.2\text{mm}$ ;  
当外形尺寸在  $1\sim 5\text{mm}$  之间时, 公差为  $\pm 0.3\text{mm}$ ; 当外形尺寸  $> 5\text{mm}$  时, 公差为  $\pm 0.4\text{mm}$ ;  
(2) 安装孔尺寸中未注尺寸公差的均为  $\pm 0.1\text{mm}$ 。

### REMARK:

- (1) In case of no tolerance shown in outline dimension: outline dimension  $\leq 1\text{mm}$ , tolerance should be  $\pm 0.2\text{mm}$ ; outline dimension  $> 1\text{mm}$  and  $\leq 5\text{mm}$ , tolerance should be  $\pm 0.3\text{mm}$ ; outline dimension  $> 5\text{mm}$ , tolerance should be  $\pm 0.4\text{mm}$ ;
- (2) The tolerance without indicating for PCB layout is always  $\pm 0.1\text{mm}$ .

## 性能曲线图 Performance Curve

